



2026
NXTG2

Build Form



NXT G2

\$20,995 CAD



STANDARD SPECIFICATIONS

POWER

- 72v Lithium SC PowerCube - 8.1kW/h
- 450 amp Controller
- 72v AC 7.5kW Motor
- Onboard Charger

WHEELS

- 14" Spyder Rims
- Low-Profile Tires

BODY

- Single paint colour
- Painted Lower Valance

COMFORT

- SC Sport seats

SAFETY

- Side & rear view mirrors
- Electromagnetic emergency brake
- 4-disc hydraulic brakes
- LED light package (head lights, tail lights, signals, brake lights, reverse lights, daytime lights)
- Horn

FEATURES

- Touchscreen Bluetooth stereo
- Apple CarPlay / Android Auto (wired & wireless)
- Backup camera
- USB charging ports
- Dual in-dash speakers
- Information gauges
- SOFTEC coil over suspension
- Tight radius rack in pinion steering
- Premium tinted folding windshield
- Locking glove box

WARRANTY

- 2-year vehicle warranty
- 5-year lithium battery warranty

VEHICLE OPTIONS

Take your NXT even further with available upgrades like our Street-Legal LSV package, premium seating, tech enhancements, and more—giving you the ability to build the vehicle that perfectly fits your needs.

■ STREET-LEGAL LSV UPGRADE - \$2,000

INCLUDES:

Transport Canada Compliance Label
17 Digit VIN
40 km/h Top Speed
DOT Approved Windshield & Wiper
3-Point Seatbelts
Side & Rear Reflectors
Slow-Moving Vehicle Triangle
Rear View Mirror

ADDITIONAL OPTIONS (NOT NEEDED IF LSV UPGRADE SELECTED)

■ NEIGHBOURHOOD SPEED SETTING (40 km/h Top Speed) - \$425

■ REAR VIEW MIRROR - \$85

■ SEATBELTS (SET OF 2) - \$295

ENTERTAINMENT PACKAGES

■ CLARITY PACKAGE - \$485

INCLUDES: 2 6.5" SPEAKERS MOUNTED IN KICK PLATE

■ ENTHUSIAST PACKAGE - \$1,785

INCLUDES: HEADLINER, 4 6.5" SPEAKERS MOUNTED IN HEADLINER

■ AUDIOPHILE PACKAGE - \$5,800

INCLUDES: HEADLINER, 6 6.5" SPEAKERS MOUNTED IN HEADLINER, 2 AMPS, 8" AMPLIFIED SUB



TIRES & RIMS

Choose from a curated selection of tires and rims to match your style and driving needs. Whether you're after a sleek street look or rugged off-road performance, we'll help you build the perfect wheel setup.

STANDARD CONFIGURATION

- 14" SC SPYDER RIMS & LOW PROFILE TIRES



UPGRADE OPTIONS

- 14" SC SPOKE RIMS - \$1,150



- 23" COURSE COMPLIANT TIRES & LIFT KIT - \$1,795



- 23" OFF-ROAD TIRES & LIFT KIT - \$1,795



- 14" SC TURBINE RIMS - \$1,150



- 23" ALL-TERRAIN TIRES & LIFT KIT - \$1,795



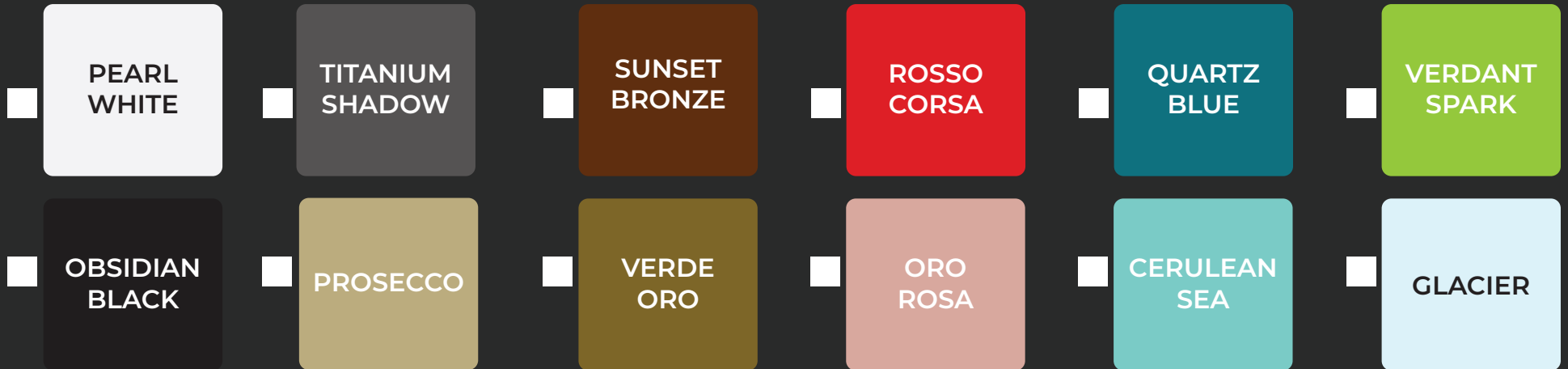
PAINT

When it comes to colour, your NXT should reflect your style. Every one of our standard paint options is available to you at no extra cost—giving you the freedom to choose the finish that fits your lifestyle best. If you're looking for something even more unique, we also offer full custom colour mixing for an additional charge, ensuring your vehicle is truly one-of-a-kind.

FINISH STYLE

☐ GLOSS ☐ MATTE

COLOUR



ADDITIONAL OPTIONS

- ☐ CUSTOM COLOUR - \$1,495
- ☐ SECONDARY PAINT COLOUR - \$995
- ☐ FULL TRIM PAINT - \$1,915
- ☐ PAINTED ROOF - \$1,125
- ☐ PAINTED RIMS - \$1,095
- ☐ PAINTED CUSTOM STEERING WHEEL - \$495

LOOKING FOR EVEN MORE CUSTOMIZATION?

Our standard build form covers a wide range of options, but your imagination doesn't have to stop there. If you're envisioning something truly unique—whether it's custom fabrication, specialty finishes, or a one-of-a-kind feature—our team is here to bring it to life.

Contact our sales team to discuss your ideas and explore additional customization possibilities beyond the form.

SEATING & STITCHING

COLOUR



■ BLACK



■ BUCKSKIN

STYLE & PATTERN



■ SC SPORT
(INCLUDED STANDARD)



■ SC CONTOUR - CROSS PANEL
\$2,095



■ SC CONTOUR - DIAMOND TOP
\$2,095



■ SC CONTOUR - CROSS DIAMOND
\$2,095

ADDITIONAL OPTIONS

- COLOUR MATCHED STITCHING - \$450
- COLOUR MATCHED PIPING - \$790
- HEATED SEATS (2 SEATS) - \$795
- EMBROIDERY - \$395
- TAILORED SEATS - \$1,195
- ARMREST HAND WRAPS - \$275
- HEADLINER - \$795
- CUP HOLDER SURROUNDS - \$495

ENCLOSURE

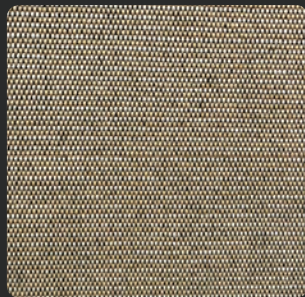
CANVAS ENCLOSURE - \$1,595



(R4 Canvas Enclosure Shown)



 BLACK



 BUCKSKIN

ACCESSORIES



■ LED LIGHT BAR
6" - \$125
12.5" - \$255
37" - \$395



■ BALL & CLUB
WASHER
\$225



■ SAND & SEED
BOTTLES
\$155



■ COOLER
\$245



■ BLACK CLUB
COVER
\$650



■ LOWER DASH
TRAY
\$495



■ BACK MESH
RETAINER
\$225



■ OVERHEAD
STORAGE
\$575

(NOT AVAILABLE
WITH LSV PACKAGE)



■ ROOF RACK
\$795



■ SPLASH GUARD
FENDERS
\$375



■ SIDE SILLS
\$395



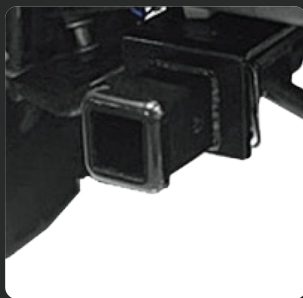
■ BULL BAR
\$695

(REPLACES LOWER
VALANCE. INCLUDED
WITH LIFT KIT)

ACCESSORIES



**HOMELINK
DOOR OPENER**
\$315



**FRONT HITCH
RECEIVER**
\$435



**REAR HITCH
RECEIVER**
\$495



**STORAGE
COVER**
\$375



WNTR PLOW
\$1,995

(REQUIRES FRONT
HITCH RECEIVER)



**UNDER CART
LED**
\$595



TIRE CHAINS
\$295

(SET OF 2)
(REQUIRES LIFT KIT)



**RUNNING
BOARDS**
\$995

LOOKING FOR EVEN MORE CUSTOMIZATION?

Our standard build form covers a wide range of options, but your imagination doesn't have to stop there. If you're envisioning something truly unique—whether it's custom fabrication, specialty finishes, or a one-of-a-kind feature—our team is here to bring it to life.

Contact our sales team to discuss your ideas and explore additional customization possibilities beyond the form.